



Harbour Storage

USAGE:

Storage

Welfare

AREA:

approx. 2000 m²

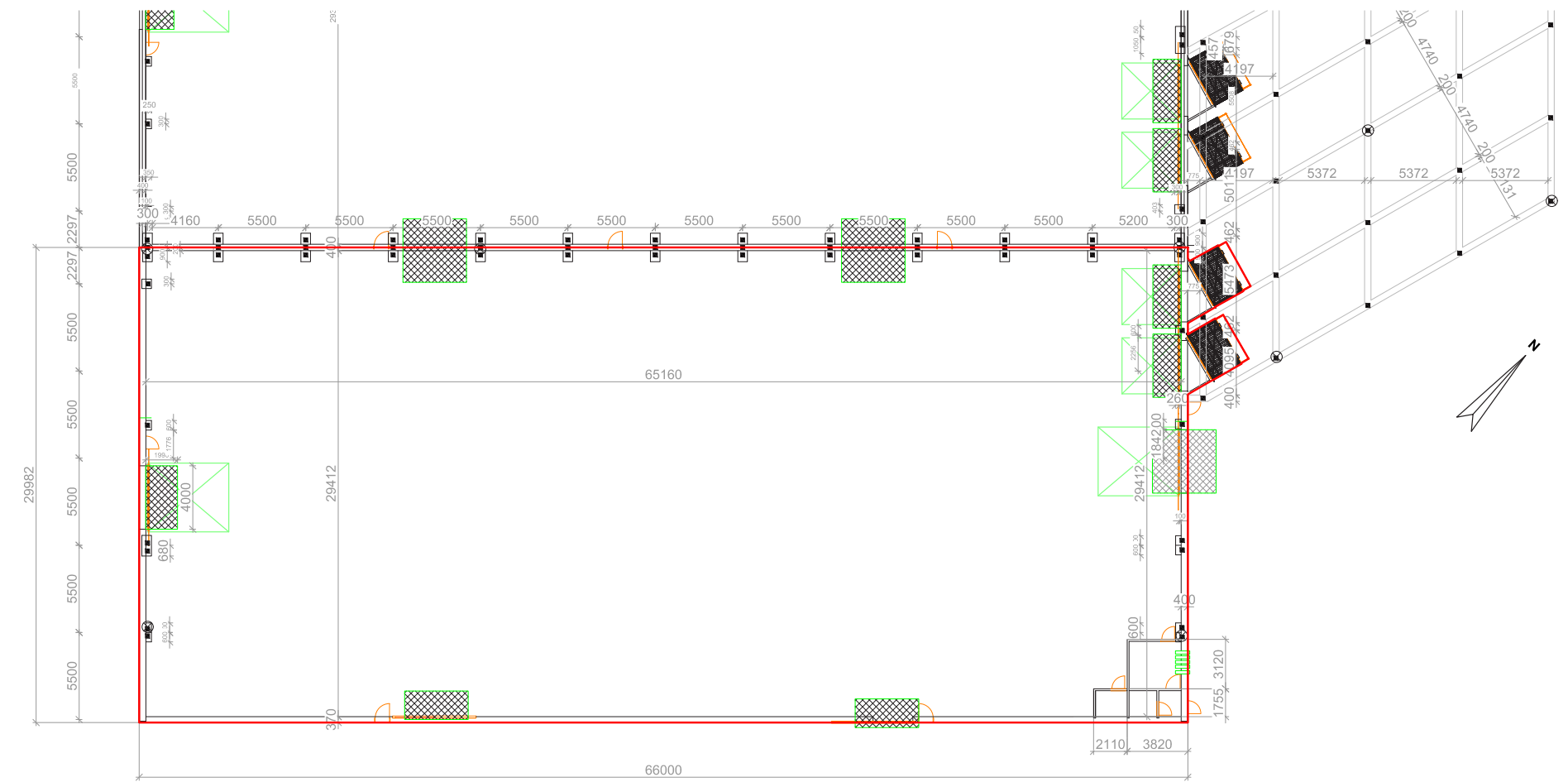
36 m²

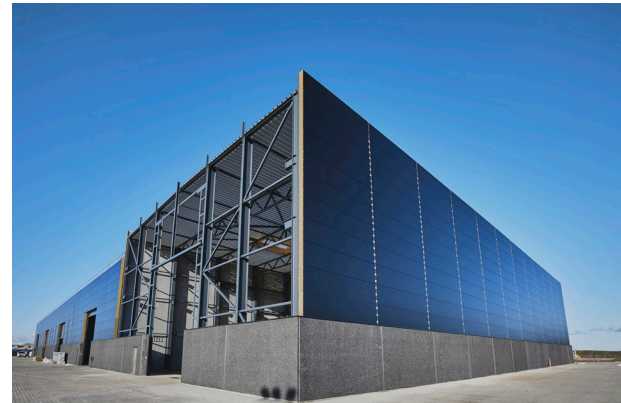
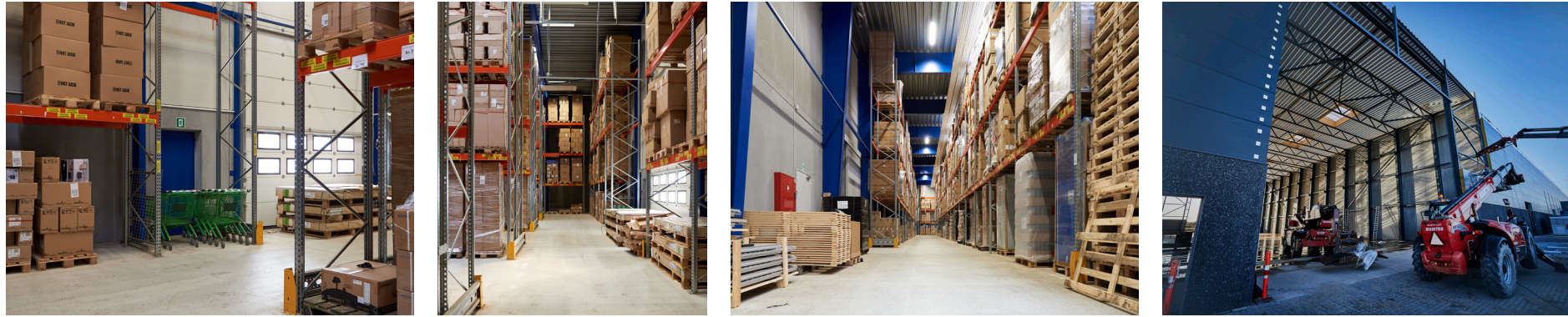


**PORT OF
AALBORG**
REAL ESTATE



- Sustainable construction
- Warehouse facilities with 8 meters ceilings and fully insulated
- Constructed from 2021 to 2023
- 2 associated loading platforms and 2 gates in level
- Office/canteen
- Toilets
- Technical room
- 80 ampere electricity





Sustainable construction

- Especially sustainable elements for the roof and facade
- The total CO₂ reduction is 411 tons or approx. 80 tons per hall
- The insulation is resistant to water, which prevents mold, damages, or leaks





For more information contact:



Jeppe Faber

Senior Commercial Manager, Real Estate

Telephone: +45 99 30 15 03

Mobile: +45 29 20 72 03

E-mail: jfa@portofaalborg.com

